

LEGEND:	
BC	= BACK OF CURB
C&G	= CURB AND GUTTER
CB	= CATCH BASIN
CD	= CHECK DAM
CL	= CENTERLINE
CMF	= CONCRETE MONUMENT FOUND
CMP	= CORRUGATED METAL PIPE
CO	= CLEAN OUT
CT	= CRIMP TOP PIN
DI	= DROP INLET
DWCB	= DBL. WING CATCH BASIN
EP	= EDGE OF PAVEMENT
FC	= FACE OF CURB
FES	= FLAIED END SECTION
FH	= FIRE HYDRANT
GI	= GRATE INLET
GW	= GUY WIRE
GP	= GUY POLE
HW	= HEAD WALL
IPF	= IRON PIN FOUND
IPS	= IRON PIN SET
JB	= JUNCTION BOX
INV	= INVERT
LLL	= LAND LOT LINE
LP	= LIGHT POLE
MP	= MANHOLE (SANITARY SEWER)
OT	= OPEN TOP PIPE
PL	= PROPERTY LINE
PP	= POWER POLE
RB	= REINFORCING BAR
RCP	= REINFORCED CONCRETE PIPE
R/W	= RIGHT-OF-WAY
TSP	= TRAFFIC SIGNAL POLE
TSD	= TRAFFIC SIGNAL BOX
TP	= TELEPHONE POLE
TSP	= TRAFFIC SIGNAL POLE

SYMBOL LEGEND:	
	= EXISTING CONCRETE
	= EXISTING RIP-RAP
	= EXISTING/PROPOSED ASPHALT
	= FIRE HYDRANT
	= GUY WIRE
	= LIGHT POLE
	= POWER POLE
	= SANITARY SEWER MANHOLE
	= CLEAN OUT
	= TRANSFORMER
	= WATER METER
	= WATER VALVE
	= DROP INLET

#### FUEL TRUCK PATH NOTE:

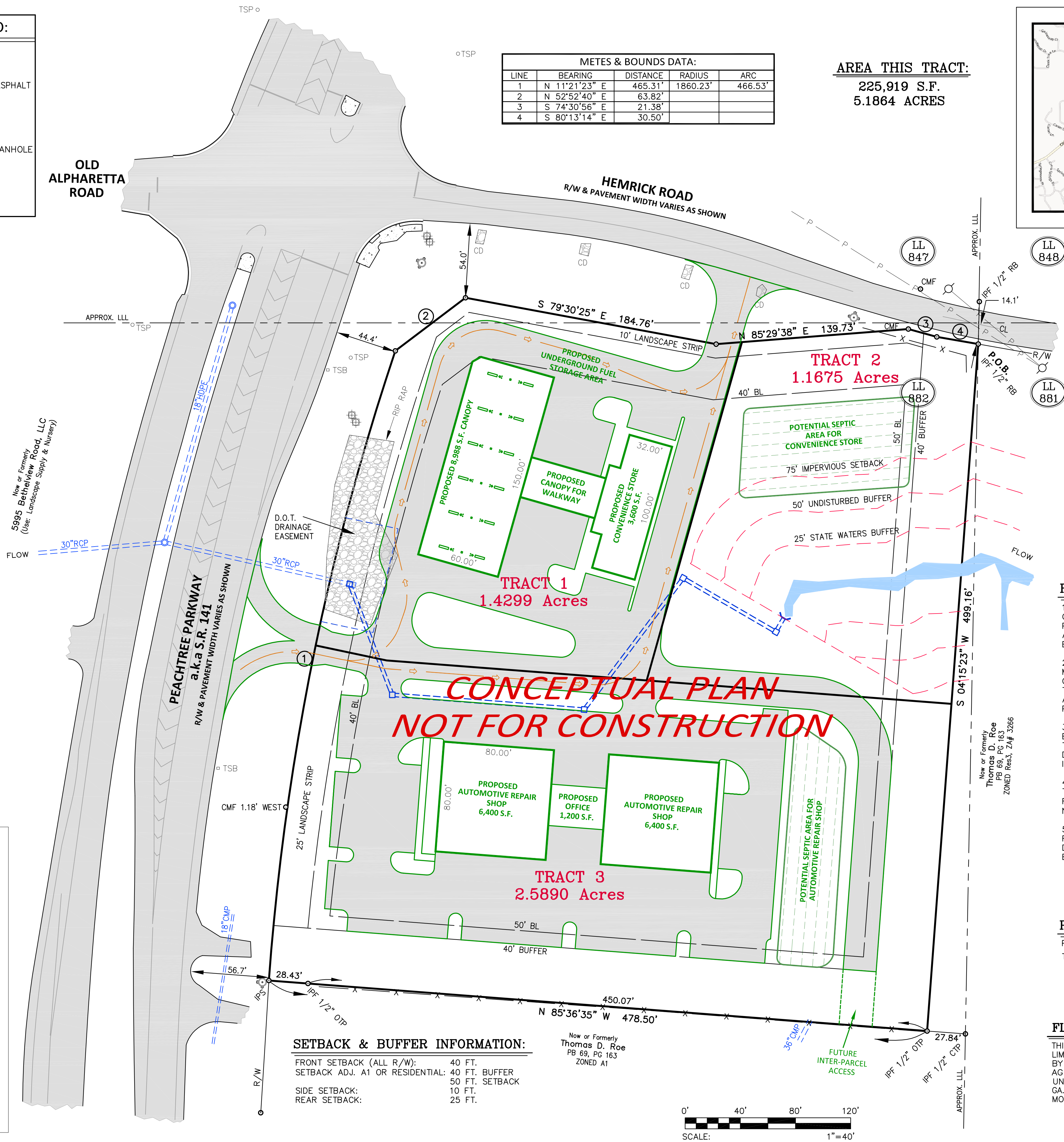
THE CONCEPTUAL PATH FOR FUEL TRUCKS SHOWN HEREON HAS A MINIMUM CENTER RADIUS OF 36 FEET AS PER AASHTO-GEOMETRIC DESIGN OF HIGHWAYS AND STREETS, EXHIBIT 2-13; MINIMUM TURNING PATH FOR INTERMEDIATE SEMITRAILER (WB-12 [WB-40]).

#### STORMWATER DETENTION NOTE:

REQUIRED STORMWATER DETENTION AND WATER QUALITY WILL BE PROVIDED FOR EACH SITE. DETENTION WILL BE UNDERGROUND UNLESS A MORE FEASIBLE SOLUTION IS DESIGNED.



AERIAL IMAGE (Bing Maps)



METES & BOUNDS DATA:				
LINE	BEARING	DISTANCE	RADIUS	ARC
1	N 11°21'23" E	465.31'	1860.23'	466.53'
2	N 52°52'40" E	63.82'		
3	S 74°30'56" E	21.38'		
4	S 80°13'14" E	30.50'		

AREA THIS TRACT:  
225,919 S.F.  
5.1864 ACRES



LOCATION MAP  
NOT TO SCALE

#### REFERENCE MATERIAL:

1. RETRACEMENT SURVEY FOR MRS. S.G. CLEMENTS, JR., DATED 5-15-1991, PREPARED BY RICHARD MAY & ASSOCIATES, INC., RECORDED IN PLAT BOOK 50, PAGE 24.
2. RIGHT-OF-WAY DEED BETWEEN MICHAEL & NORMA VAUGHAN AND THE GEORGIA DEPARTMENT OF TRANSPORTATION, DATED MAY 27, 2005 AND RECORDED IN DEED BOOK 3813, PAGE 684.
3. QUIT-CLAIM DEED FOR PURPOSE OF BOUNDARY LINE AGREEMENT BETWEEN THOMAS ROE AND JACQUELINE CLEMEN, DATED AUGUST 15, 1991 AND RECORDED IN DEED BOOK 547, PAGE 493.
4. GEORGIA DEPARTMENT OF TRANSPORTATION CONSTRUCTION PLANS FOR PROJECT NO. STP-104-1(39), SHEET NO. 74.
5. HEMRICK ROAD - DELINEATION RESULTS; JURISDICTIONAL WATERS DELINEATION PREPARED BY CORBLU ECOLOGY GROUP, DATED MARCH 6, 2014.

#### PARCEL INFORMATION:

PARCEL ID NO. 111 316  
THIS PROPERTY IS ZONED CBD, ZA#2975.

#### FLOOD HAZARD NOTE:

THIS PROPERTY IS NOT CONTAINED WITHIN THE LIMITS OF A FLOOD HAZARD ZONE AS DEFINED BY THE FEDERAL EMERGENCY MANAGEMENT AGENCY FLOOD INSURANCE RATE MAP OF UNINCORPORATED FORSYTH COUNTY, GA. (COMMUNITY PANEL NO. 13117C0235F) MOST RECENTLY REVISED MARCH 4, 2013

